



Direct Dial/Ext: 03000 416749  
e-mail: [andrew.tait@kent.gov.uk](mailto:andrew.tait@kent.gov.uk)  
Ask for:  
Date: 16 March 2021

Dear Member

**KENT FLOOD RISK MANAGEMENT COMMITTEE - MONDAY, 15 MARCH 2021**

I am now able to enclose the following presentation that was unavailable when the agenda was printed.

**Agenda Item No**

5 **Update from the Environment Agency - Presentation by Sally Harvey (Pages 1 - 16)**

Yours sincerely

A handwritten signature in black ink, appearing to read 'Ben Watts', is written over a faint circular stamp.

Benjamin Watts  
General Counsel

This page is intentionally left blank

# Programme Overview

# KSL Properties protected from Flooding and Coastal Erosion (OM2&3) delivery

Page 2

	15/16	16/17	17/18	18/19	19/20	20/21	Total
15/16 Approved Programme	6,499	7,644	5,876	9,196	12,164	7,996	49,375
Out-turn & forecast	7,357	8,363	11,932	7,470	8,686	10,823	54,584
Difference 15/16 to Forecast	858	719	6,056	-1,726	-3,478	2,827	5,256

## To date

- We have reduced flood and coastal erosion risk to **50,092** properties through our projects
- We have achieved 100% of our DEFRA six year settlement target
- We are forecasting to beat our target by 5,256 properties at reduced flood and coastal erosion risk

# GiA performance

	15/16	16/17	1718	18/19	19/20	20/21	Total
15/16 Approved Programme	36.2	45.5	56.2	55.9	51.8	67.5	313.1
Out-turn & forecast	44.2	40.7	47.5	45.5	49.8	86.7	314.4
Difference 15/16 to Forecast	8.0	- 4.8	- 8.7	- 10.4	- 2.0	19.2	1.3

## Key programme facts

- We have and will delivered £314m of capital GiA work
- We have achieved £44.7m of approved efficiency savings to date
- £35m of contributions have been secured to support this programme
- Year on year we are increasing our skills and capacity to deliver

# Medway Property Flood Resilience (PFR)

- Total cost of project is £1.8m of which £1.5m is GiA, £215k Local Levy and £66k of contributions
- 285 Properties at reduced flood risk
- Survey of over 460 properties across 8 parish council areas around the confluence of the Rivers Medway, Beult and Teise, including Yalding and Collier Street
- This scheme (Phase 1b) had 85% take up, compared to an average take up of 70% of other PFR schemes

Page 4



*Flood barriers reducing risk to 3 properties*



*Raised substation at Burgess Bank, Yalding*



# Broomhill Sands coastal defences

- £30m scheme reduced the risk of flooding to 1,388 homes and over 100 businesses.
- Work completed in spring 2016 which also realised over £6.4m of efficiencies.
- Works over a 2.5km of frontage included :
  - 265,000T of rock delivered
  - Over 36,100T of clay removed from under the beach and re-used

Page 5



# Hythe Ranges

- £25m investment, delivered in partnership with the Ministry of Defence (MoD) who contributed 27% of the cost.
- Reduces flood risk to 787 properties on the south Kent coastline.
- Works involved refurbishment and raising of 43 timber groynes, construction of a 200m rock revetment and recharging the shingle beach with over 300,000m<sup>3</sup> of material.
- Team have saved over 840t of CO<sub>2</sub>e and completed on time Feb 2021 enabling KSL to hit the 6yr programme target





# Sandwich Town Tidal Defence Scheme

- The scheme reduces flood risk to 488 homes and 94 businesses was delivered in partnership with Pfizer and Kent County Council.
- The scheme cost £24.6m, (£23.5m project cost, plus £1.1m recovery works following 2013 tidal surge).
- Won gold in the National Considerate Constructors Award.



# Fairlight Coast Protection scheme (phase 3) – Rother District Council

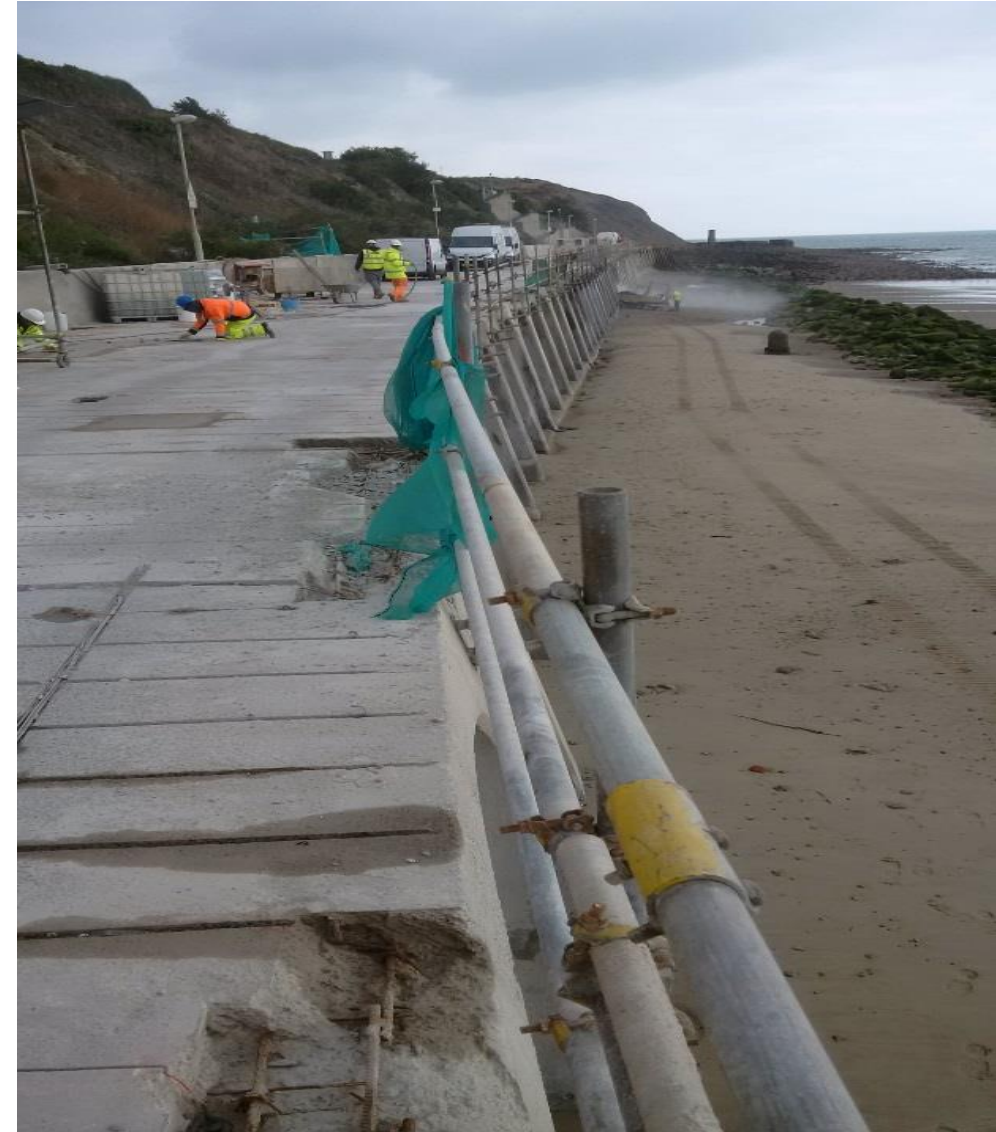
- Scheme reduced risk of coastal erosion to 150 properties.
- Works involved Construction of rock revetment at toe of cliffs
- £1.5m Capital Funding allocated and £154k contribution secured.



# Coronation Parade, Folkestone, Shepway District Council

- Scheme reduced coastal erosion risk to 10 properties and National infrastructure.
- Works involved:
  - Major concrete repairs to Coronation Parade
  - Impressed cathodic protection to steel reinforcement
  - 60m of rock revetment to prevent outflanking

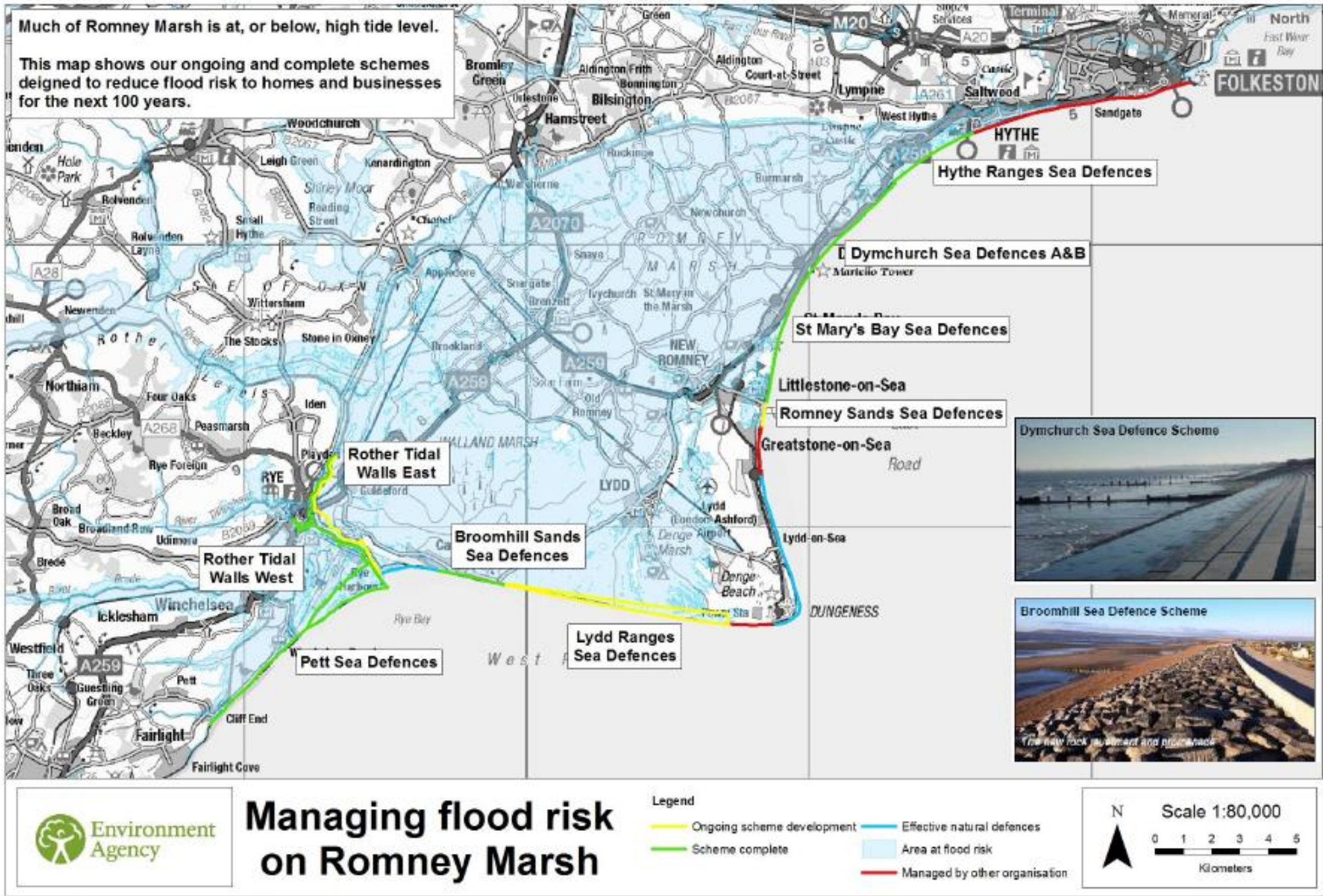
Page 9 £3m Capital GiA and £1.9m of contributions secured.



# Salt Fleet Flats

- 67ha intertidal habitat created in total, of which 49ha is required for the port and 18ha available for EA use.
- Working in partnership reduced the cost to us significantly, from c. £100,000 per hectare to £30,000 per hectare.
- First managed realignment ever carried out in Kent.





# Next Spending review Draft allocation principles

- Invest to achieve our ambition of a nation ready for, and resilient to, flooding and coastal change.
- Invest £5.2bn to better protect properties and infrastructure by 2026/27.
- Support our carbon and sustainability ambitions.
- Invest to achieve a wider range of outcomes
  - Benefit the economy.
  - Maintain our ability to warn and inform people and respond to incidents
  - Enhance the environment.
- Work in collaborative partnerships to deliver multiple benefits.
- Build and deliver balanced programmes.
- Provide appropriate funding towards statutory requirements and essential support services

# Next 6 year programme

£m	2021/22	2022/23	2023/24	2024/25	2025/26	2026/27	Total
Total Project spend	70.1	84.9	76.8	78.0	77.5	105.1	<b>492.3</b>
GiA	64.8	76.3	65.1	67.2	67.5	88.4	<b>429.3</b>
Public Contributions	1.4	5.9	5.6	1.0	0.2	-	<b>14.1</b>
Private Contributions	1.4	0.3	0.3	1.4	1.4	-	<b>4.9</b>
Levy	2.0	1.3	2.4	4.0	3.5	4.1	<b>17.4</b>
Programme Funding Gap	0.4	1.1	3.4	4.3	4.8	12.6	<b>26.7</b>
Properties at reduced risk from flooding and coastal erosion	5,852	4,981	9,226	5,483	6,087	9,308	<b>40,937</b>

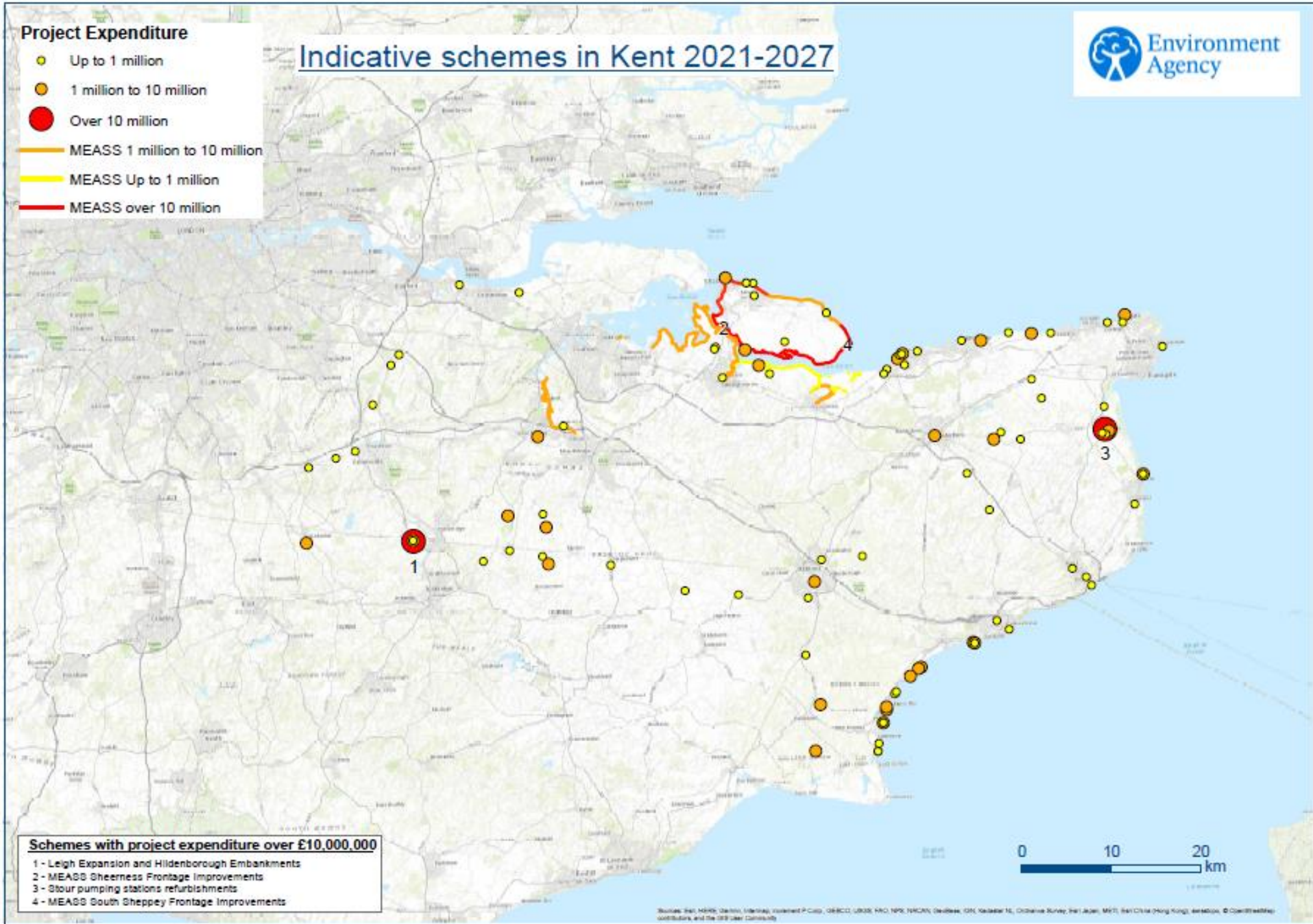
# Indicative schemes in Kent 2021-2027

**Project Expenditure**

- Up to 1 million
- 1 million to 10 million
- Over 10 million

**MEASS**

- MEASS 1 million to 10 million
- MEASS Up to 1 million
- MEASS over 10 million



**Schemes with project expenditure over £10,000,000**

- 1 - Leigh Expansion and Hildenborough Embankments
- 2 - MEASS Sheerness Frontage Improvements
- 3 - Stour pumping stations refurbishments
- 4 - MEASS South Sheppey Frontage Improvements

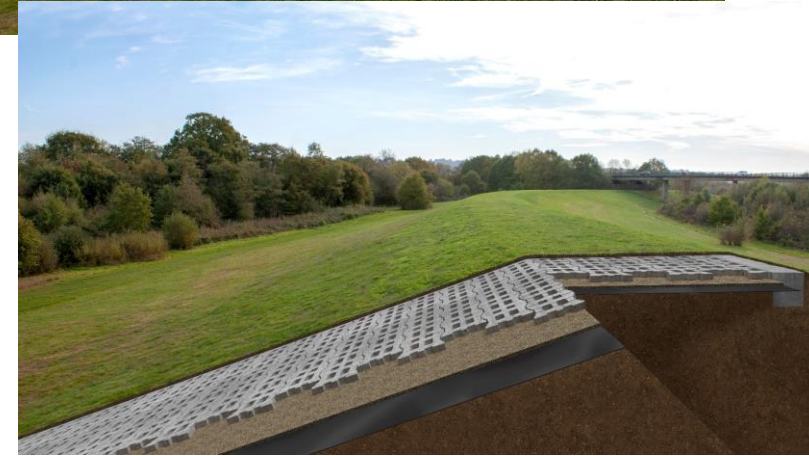


Sources: Sea, HARK, Ockford, Intermap, Wastwell P-CAD, GBCCO, LBOS, PAC, NPS, NCA, Ockford, ION, Kestrel 1E, Ockford Survey, PFI, Jagan, MFT, Sea China (Hong Kong), SeaMap, © Copied/Redrawn contributors, and the Ockford Community



# Leigh Expansion and Hildenborough Embankments

- £13m construction profile of GiA and contributions
  - 1,570 properties and business better protected
  - Up to 657 Outcome Measure 2 (properties no longer flooding in 1.3% event)
- Flood storage level increase 28.05 to 28.60m (AOD)
  - Widespread benefits in Hildenborough
  - 24% increase in capacity (5.8million 7.3million cubic metres)



# Lydd Ranges Sea defence scheme

- £31.3m scheme costs of which MOD is contributing £13.2m
- 1,761 properties at reduced risk of coastal flooding
- Significant Carbon reduction plan
  - Low carbon cement for 1.8 km road way – national trials
  - Biofuels for marine shingle and site plant

Page 16

